



Quality, Fast, Affordable
Transportable Homes

Plans & Pricing

Welcome to Prestige Modular Smart Homes.

We are a revolutionary kaupapa based in Hawke's Bay that designs and builds quality, affordable, sustainable transportable homes for customers throughout the North Island.

At Prestige Modular Smart Homes, it is our dream to see people in healthy and affordable homes.

Because every Kiwi deserves a place to call home.





**Why Prestige is the
best choice
for your new home**



Short Lead Times

Prestige Modular Smart Homes can be built in a matter of weeks with preference to local materials where available, and delivered to location.



Affordable

With rapid build turnaround and innovative technologies, building with Prestige saves you time and money.



Low Maintenance

Our pre-finished walls come in a range of colours and textures, and require no plastering, sanding, grouting or painting, both inside and out.



Warm, Dry & Quiet

Live in comfort with high thermal qualities and innovative window frames providing higher acoustic reduction.



Modern, Customisable Finishings

Our homes have stunning modern designs, offering a wide range of flooring options, kitchen designs, colours, and textures.



Steel Framing

Steel framing is robust, resilient, and allows for incredible build precision. On top of this, it is a recyclable product and minimises construction waste.



Environmentally Responsible

Our smart homes are energy efficient by design, saving you money and reducing your carbon footprint. We also use more recyclable products than standard homes.

About Us



With over 30 years of experience in the housing industry and a desire to improve the lives of their people, their community and their region, business couple Lyndon and Derisa Hakopa launched Prestige Modular Smart homes after recognising the urgent need for affordable, quality, energy-efficient housing.

Prestige Modular Smart Homes aims to be the trusted provider of choice for families in the Hawke's Bay region, ensuring their dream of owning a quality home becomes a reality.



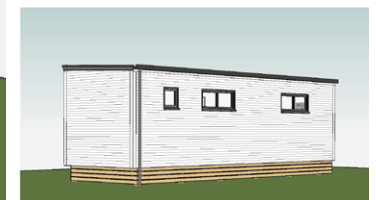
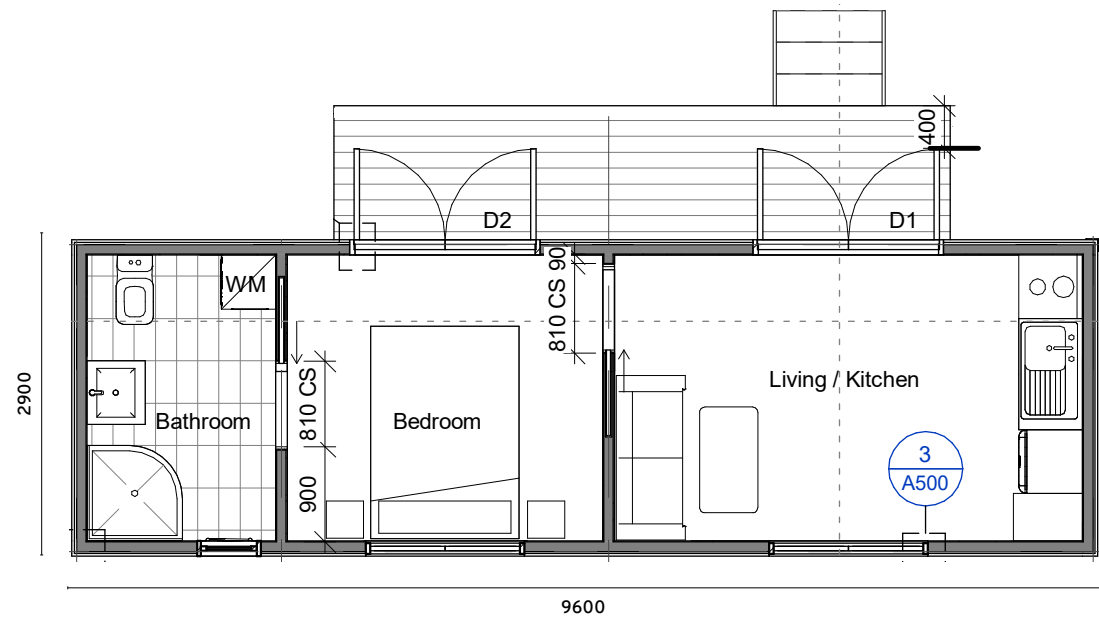
**Discover our
current
floor plans and
pricing**

1 Bedroom Home

Size: 27.8m²

Priced from: \$96,000 incl. GST

Exterior cladding can be any colour from the Coloursteel range.

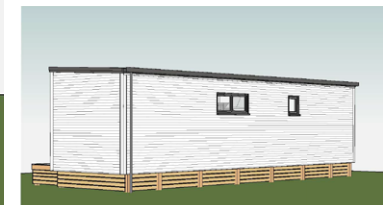
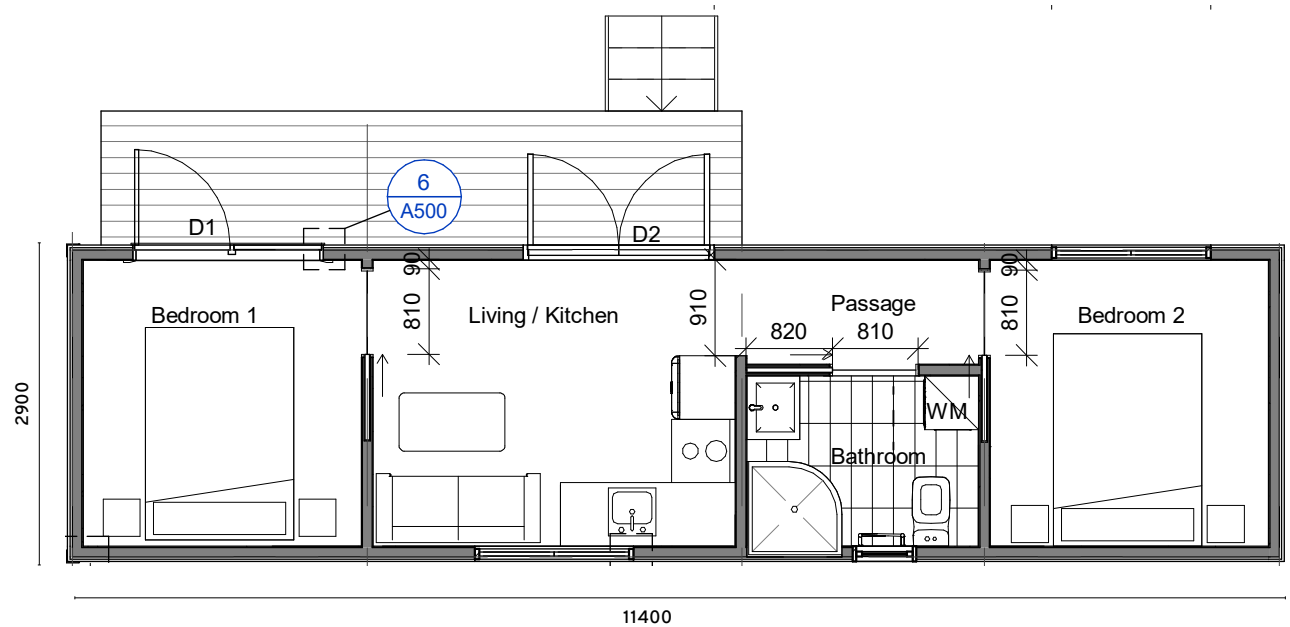


2 Bedroom Home

Size: 33.06m²

Priced from: \$105,600 incl. GST

Exterior cladding can be any colour from the Coloursteel range.





Want to know more?

We'd love to chat about how we can turn your dreams into reality with a comfortable, modern, affordable new home.



Contact us today

Phone: 021 851 027

Email: derisa@prestigeltd.co.nz

www.prestigesmarthomes.co.nz

